










Chesham Road, Berkhamsted, HP4 | Freehold

 5 Bedrooms  3 Bath/Shower Rooms  4 Reception Rooms  Garaging and outbuildings  Over 2 acres

 EPC Band D  Council Tax Band G - £3,883.96

ashtons.co.uk

The
Collection
TOWN | COUNTRY | EQUESTRIAN

Chesham Road, Berkhamsted, HP4

A gorgeous character home in a delightfully secluded location on the edge of Berkhamsted. This lovely home offers spacious family accommodation in excellent condition.

- 🔑 Secluded character home of great charm
- 🔑 Set in over 2 acres of mature gardens
- 🔑 Over 5,000 sq ft of living space inc. annexe
- 🔑 Surrounded by countryside and forest
- 🔑 Highly accessible to Berkhamsted by car and foot
- 🔑 Set in over 2 acres of mature gardens
- 🔑 Over Paddock with separate access and further potential

Description

An exceptional country cottage with five first floor bedrooms and four reception rooms complemented by three bathrooms and a light, well appointed country style Mark Wilkinson kitchen breakfast room.

The sunny courtyard with heated swimming pool is surrounded by an extensive range of outbuildings including an annexe, garaging, changing room, plant room and stable/machinery store.

Surrounding the house are the extensive mature private gardens, mostly laid to lawn with mature shrubs and trees, as well as an extensive area formerly used for propagation and small-scale cultivation that may have potential for future development subject to the usual permissions.

We strongly recommend viewing this delightful and surprisingly peaceful home.

Location

A secluded private property Keepers is ideally located for access to local road links to London and the M25 as well as the north. Walking distance through beautiful, wooded areas to Berkhamsted. Local rail and tube services can be found in Berkhamsted and Chesham respectively, both within 15 minutes drive.

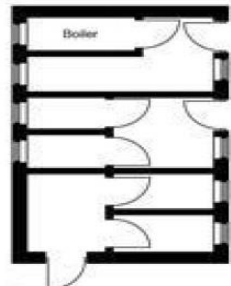








Total = 525.3 sq m / 5654 sq ft
(Excluding Open Barn)



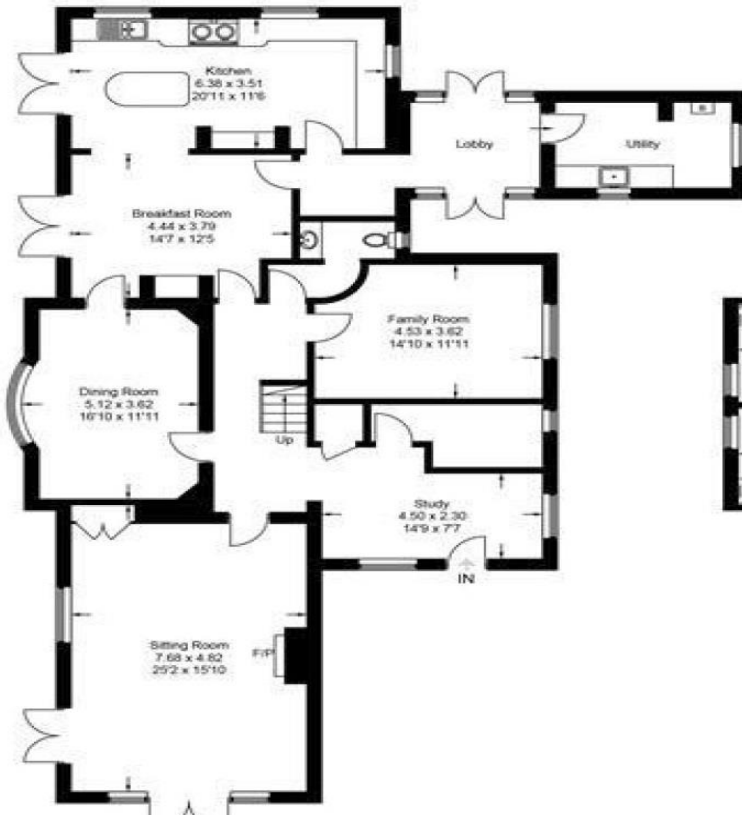
Outbuildings



(Not Shown In Actual Location / Orientation)



(Not Shown In Actual Location / Orientation)



Ground Floor



First Floor



Annex Ground Floor

Annex First Floor

Contact one of our property experts today:

📞 01442 862533 ✉ thecollection@ashtons.co.uk 💻 ashtons.co.uk/the-collection

Berkhamsted | Harpenden | Hitchin | Redbourn | St Albans | Welwyn Garden City

The
Collection
TOWN | COUNTRY | EQUESTRIAN