



2 Bedrooms



1 Bath/Shower Room + WC



1 Reception Room



On Street



Private Garden



EPC Band - D

Council Tax

Band C: £2,097.02 2025/26

Local Authority
St Albans Council



Nicholls Close, Redbourn, AL3 7HZ
Guide Price £425,000 Freehold

Nicholls Close, Redbourn, AL3 7HZ

Attractive two bedroom semi-detached home, located on a pretty green close to Redbourn Common and village amenities.

🏡 Spacious semi-detached village home

🏡 Overlooking a pretty green

🏡 Requires some updating

🏡 Large living/dining room

🏡 Two double bedrooms

🏡 Kitchen/breakfast room

🏡 Private garden

Description

This delightful semi-detached home offers generous accommodation and a good size garden. The property requires some updating but offers good scope to extend (subject to the necessary consents).

The entrance hall leads into a large living/dining room which overlooks the Green. To the rear is a kitchen/diner with access to the rear garden. Upstairs there are two double bedroom and a bathroom.

Outside there are gardens to front and rear. The rear garden is a good size and is fully fenced and mainly laid to lawn with a greenhouse.

Location

Nicholls Close is located close to the village school and Redbourn Common and a short walk to the High Street in Redbourn, a picturesque village in Hertfordshire. Conveniently located for the M1 J9 and M25 motorways and Luton Airport, with easy access to efficient rail links at Harpenden and St. Albans.

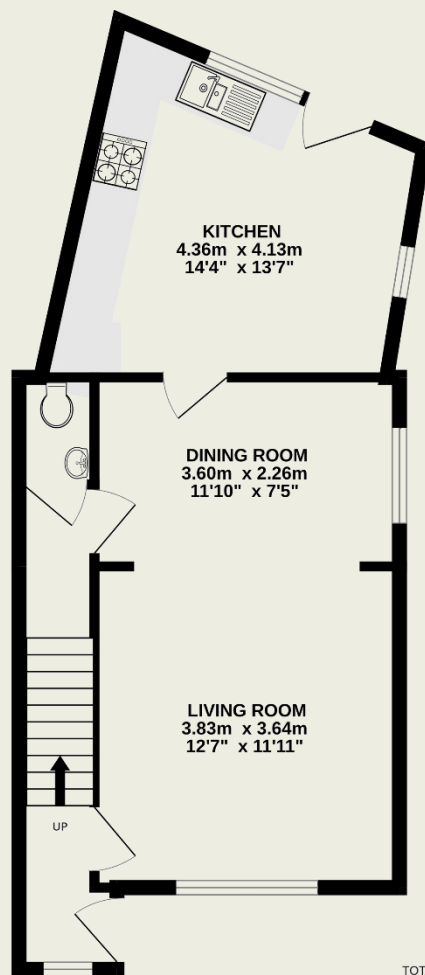




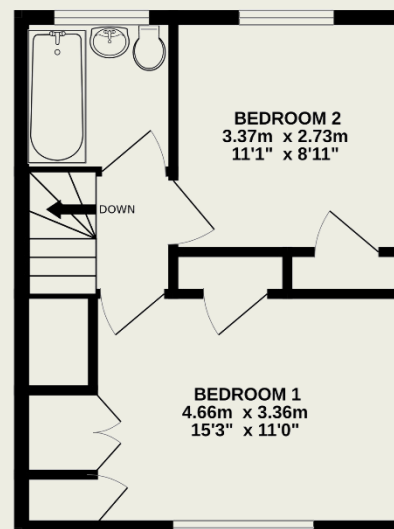
Important Information

These particulars do not constitute an offer or contract in whole or part. The statements contained herein are made without responsibility on the part of Ashtons or the vendors and they cannot be relied upon as representatives of fact. In respect of floor plans, these are for illustrative purposes only. The measurement and position of each element is approximate and must be viewed as such. Intending purchasers should therefore satisfy themselves by inspection or otherwise as to their correctness. The vendors do not make or give, and neither Ashtons nor any person in their employment has any authority to make or give, any representation or warranty whatsoever in relation to this property. We offer a wide range of services through third party providers including solicitors, surveyors, removal firms, mortgage providers and EPC suppliers. We receive additional payments for administering suppliers quoting software and making referrals. You are not under any obligations to use these services and it is your discretion whether you choose to deal with these parties or your own preferred supplier. You should be aware the average payment we received in 2021 equated to £48.36 per referral.

GROUND FLOOR
42.8 sq.m. (461 sq.ft.) approx.



1ST FLOOR
27.6 sq.m. (297 sq.ft.) approx.



TOTAL FLOOR AREA : 70.5 sq.m. (758 sq.ft.) approx.

This floorplan is for illustrative purposes only. The measurement and position of each element is approximate and must be viewed as such.