



3 Bedrooms



1 Bath/Shower Room + WC



2 Reception Rooms



Garage and Parking



Courtyard Garden



EPC Band TBC

Council Tax

Band C

£2,046.81 2025/26

Local Authority

North Hertfordshire District
Council



Whimbush Grove, Hitchin, Hertfordshire, SG5 1PT
Guide Price £650,000 Freehold

Whinbush Grove, Hitchin, Hertfordshire, SG5

A rarely available, characterful home in an exclusive row of unique cottages, ideally located near the town centre, mainline station, and top schools.

- 🏡 Spacious and characterful three-bedroom mid-terrace home
- 🏡 Open-plan living/dining area with stunning fireplace and log burner
- 🏡 Bright conservatory ideal as a home office or additional living space
- 🏡 High-spec kitchen with Velux window and modern fittings
- 🏡 Stylish family bathroom and three well-proportioned bedrooms
- 🏡 Low-maintenance courtyard garden
- 🏡 Separate Garage and allocated parking

Description

This beautifully presented three-bedroom mid-terrace home effortlessly combines character and contemporary living, offering spacious, well-balanced accommodation ideal for modern family life. Upon entering, you're greeted by a bright and welcoming hallway that leads into a generous open-plan living and dining area. This inviting space features a striking fireplace with a log-burning stove and flows into a versatile conservatory, currently utilised as a home office but equally suited as an additional sitting area.

The impressive kitchen at the rear of the property has been finished to a high specification and is flooded with natural light from a Velux window. The modern design and quality fittings create a functional yet stylish space. A convenient downstairs cloakroom completes the ground floor. Upstairs, the property boasts three well-proportioned bedrooms, including two generous doubles and a comfortable single, all served by a contemporary family bathroom with sleek finishes and fittings.

Externally, the low-maintenance courtyard garden is tastefully block-paved with a charming, planted border and benefits from a rear gated pedestrian access. Additional features include a separate garage and an allocated parking space to the front, ensuring both convenience and practicality.

Location

Winbush Grove is a highly sought-after location, known locally for its charming row of colourful and characterful cottages. With just ten properties in total along this quiet enclave, homes here are rarely available. Its central location is exceptionally popular, just a short stroll from the town centre, mainline station, local amenities, and within the catchment area for excellent schools.

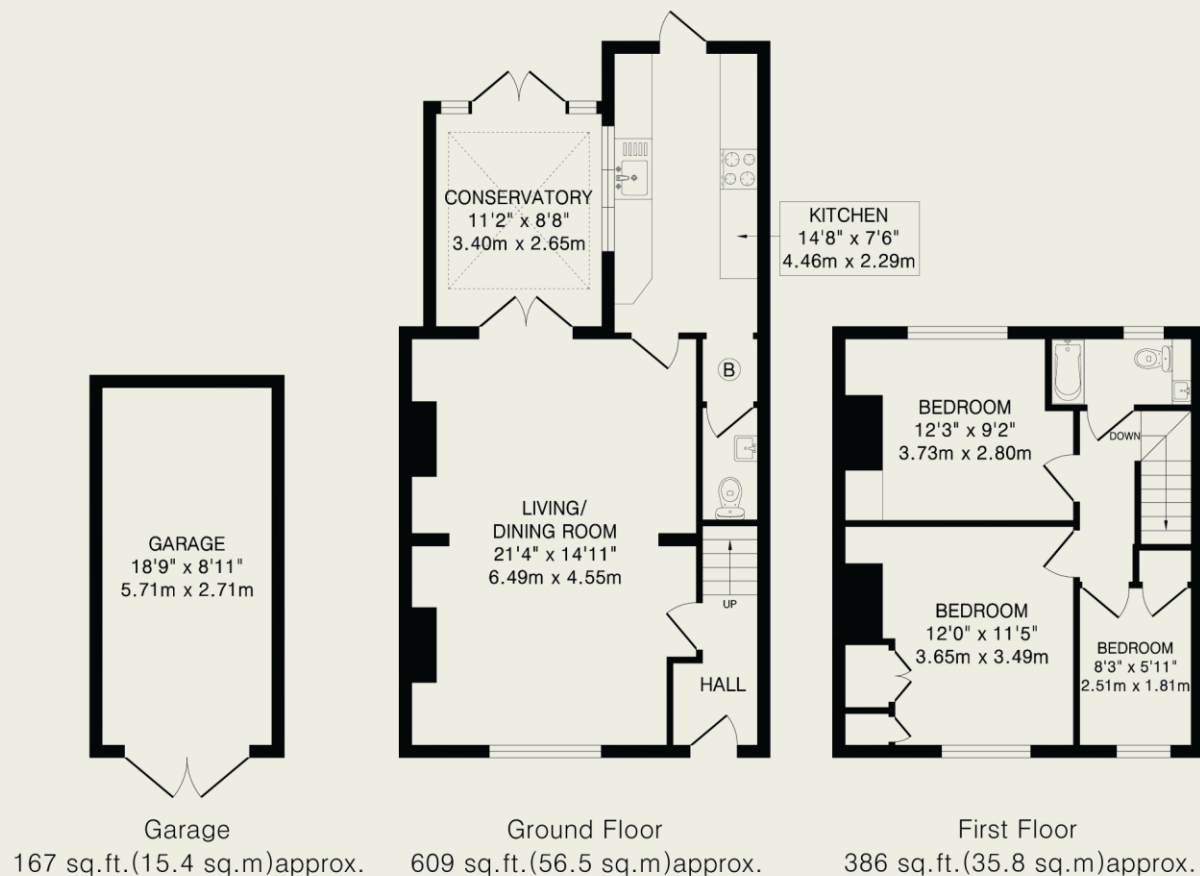




Important Information

These particulars do not constitute an offer or contract in whole or part. The statements contained herein are made without responsibility on the part of Ashtons or the vendors and they cannot be relied upon as representatives of fact. In respect of floor plans, these are for illustrative purposes only. The measurement and position of each element is approximate and must be viewed as such. Intending purchasers should therefore satisfy themselves by inspection or otherwise as to their correctness. The vendors do not make or give, and neither Ashtons nor any person in their employment has any authority to make or give, any representation or warranty whatsoever in relation to this property.

We offer a wide range of services through third party providers including solicitors, surveyors, removal firms, mortgage providers and EPC suppliers. We receive additional payments for administering suppliers quoting software and making referrals. You are not under any obligations to use these services and it is your discretion whether you choose to deal with these parties or your own preferred supplier. You should be aware the average payment we received in 2021 equated to £48.36 per referral.



This floorplan is for illustration purposes only. The measurements and position of each element are approximate and must be viewed as such.