



3 Bedrooms



1 Shower Room + WC



2 Reception Rooms



Driveway



Large Garden



EPC Band TBC

Council Tax

Band C: £2,080.09 2025/26

Local Authority  
Dacorum Council



**Cavendish Road, Markyate, St Albans, AL3 8PT**  
**Guide Price £500,000 Freehold**



## Cavendish Road, Markyate, St Albans

Delightful three-bedroom semi-detached home with large garden and off-street parking, located close to amenities in this popular Hertfordshire village.

- Beautifully presented village home
- Three double bedrooms
- Large garden
- Two reception rooms
- Modern fitted kitchen and separate utility room
- Stylish shower room and guest cloakroom
- Off-street parking

### Description

This beautifully presented home offers spacious and light accommodation and a generous garden. The property is well located just a short stroll from the village High Street and amenities.

To the front of the property a driveway provides off-street parking. The accommodation includes a welcoming hallway, an attractive living room with feature fireplace and separate dining room with wood flooring and French doors opening out to the garden. A modern fitted kitchen sits just off and leads through to a useful utility room and storage shed at the rear. There is a guest cloakroom on this level off the hallway.

Upstairs there are three double bedrooms served by a stylish contemporary shower room.

Outside the rear garden is a particular feature and is an excellent size, mainly laid to lawn with patio seating areas to enjoy the sun all day long!

### Location

The property is situated in Cavendish Road just off the High Street and close to a good range of amenities. Markyate is a popular village within easy reach of both St Albans and Harpenden, which offer wider amenities and fast rail links into London St Pancras and The City. Markyate is also within easy reach of the M1 and Luton Airport.

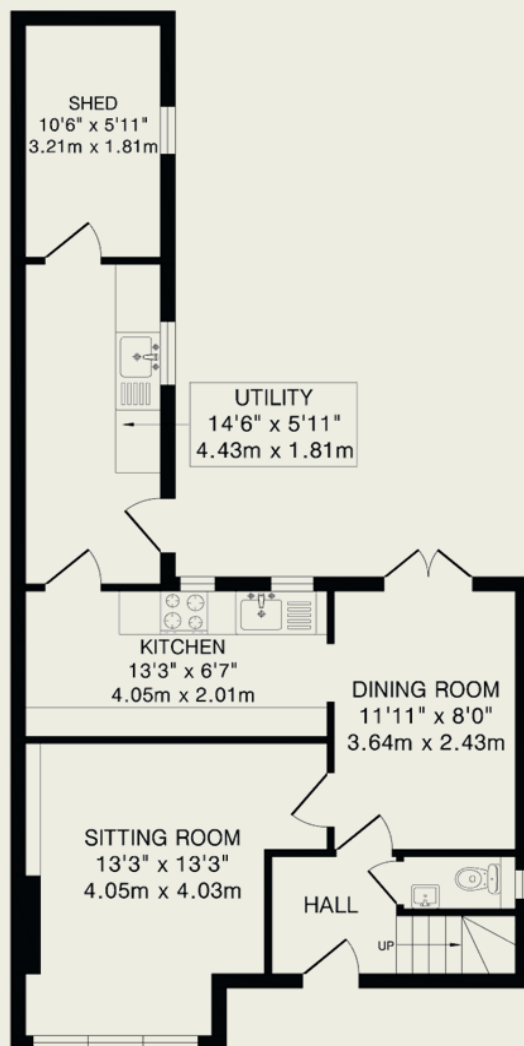




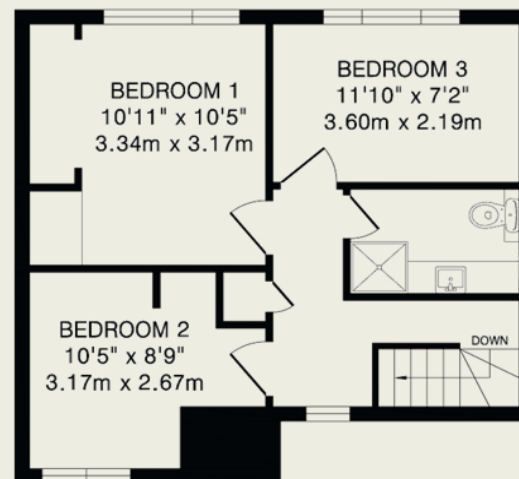


#### Important Information

These particulars do not constitute an offer or contract in whole or part. The statements contained herein are made without responsibility on the part of Ashtons or the vendors and they cannot be relied upon as representatives of fact. In respect of floor plans, these are for illustrative purposes only. The measurement and position of each element is approximate and must be viewed as such. Intending purchasers should therefore satisfy themselves by inspection or otherwise as to their correctness. The vendors do not make or give, and neither Ashtons nor any person in their employment has any authority to make or give, any representation or warranty whatsoever in relation to this property. We offer a wide range of services through third party providers including solicitors, surveyors, removal firms, mortgage providers and EPC suppliers. We receive additional payments for administering suppliers quoting software and making referrals. You are not under any obligations to use these services and it is your discretion whether you choose to deal with these parties or your own preferred supplier. You should be aware the average payment we received in 2021 equated to £48.36 per referral.



Ground Floor  
551 sq.ft.(51.2 sq.m)approx.



First Floor  
405 sq.ft.(37.6 sq.m)approx.

TOTAL FLOOR AREA: 956 sq.ft.(88.8 sq.m)approx.