



Old Ramerick Barns, Bedford Road, Ickleford, SG5 3SB | Guide Price £1,250,000

 4 Bedrooms  3 Bath/Shower Rooms  3 Reception Rooms  Driveway and Carport & Garage  Well maintained Gardens
 EPC Band B  Council Band: G – £3,837.75 2025/26  North Hertfordshire District Council

ashtons.co.uk

The
Collection
TOWN | COUNTRY | EQUESTRIAN

Old Ramerick Barns, Bedford Road, Ickleford, SG5

A stunning four/five-bedroom converted barn in Ickleford, Hitchin. Combines character and modern comfort with spacious interiors and countryside views, perfect for families seeking style, space, and tranquility in a sought-after village setting.

- Beautifully converted barn with four bedrooms
- Spacious open-plan kitchen, dining, and living area
- Principle bedroom with its own en-suite and dressing room
- Self contained detached annexe
- Ample parking, including a carport and garage
- Well maintained gardens
- Short drive from Hitchin town centre

Description

This beautifully converted barn offers spacious and versatile accommodation, perfectly suited to modern family living. Upon entry, you're welcomed by a bright and inviting entrance hall, complete with a convenient downstairs cloakroom.

The ground floor features three well-proportioned reception rooms, including a useful home office and a spacious sitting room with a charming wood-burning stove. At the heart of the home is a generous kitchen, breakfast, and dining area with bi-fold doors opening to the garden. An adjoining family room—also with bi-fold doors—adds further flexibility, making it ideal for entertaining or relaxing. A separate utility room enhances the practicality of the space.

Upstairs, a spacious landing leads to four generously sized bedrooms. The principal bedroom boasts vaulted ceilings, a walk-in dressing room, and a stylish en-suite bathroom. The second bedroom also benefits from its own en-suite, while the remaining bedrooms are served by a well-appointed family bathroom. All rooms enjoy plenty of natural light, with some offering attractive countryside views.

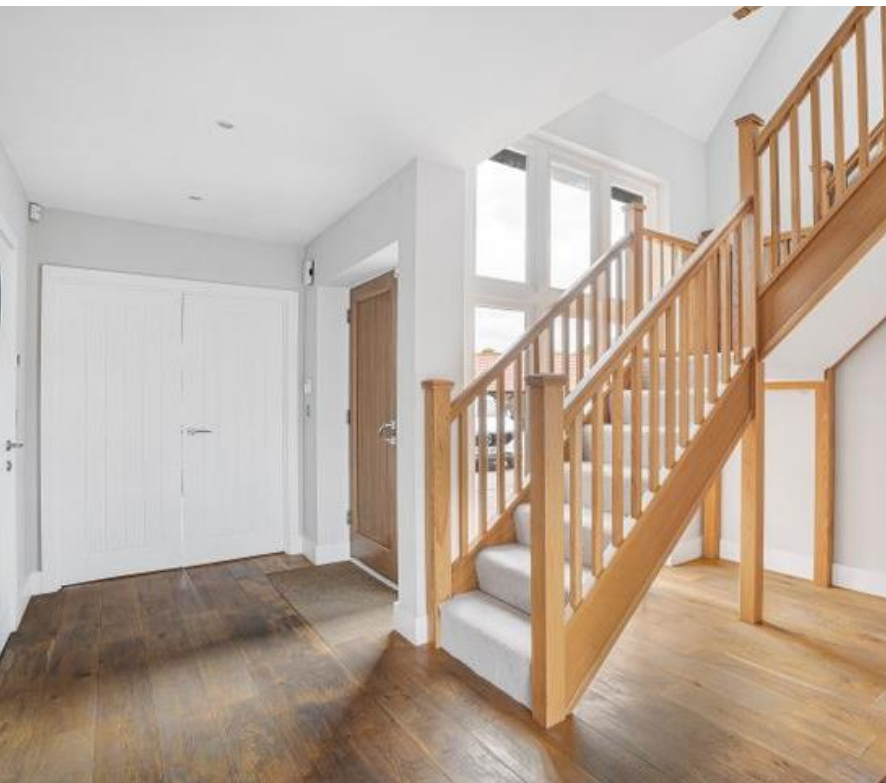
Outside, the property provides ample off-street parking, including a double carport and a single garage with power and lighting. The generous plot includes two established, well-maintained gardens, one of which features a large patio area—ideal for outdoor dining and relaxation.

A key highlight is the detached, self-contained annexe arranged over two floors. It comprises an open-plan kitchen/living area, a shower room, and a first-floor bedroom. Currently used as a successful Airbnb, this versatile space is perfect for guests, extended family, or generating additional rental income.



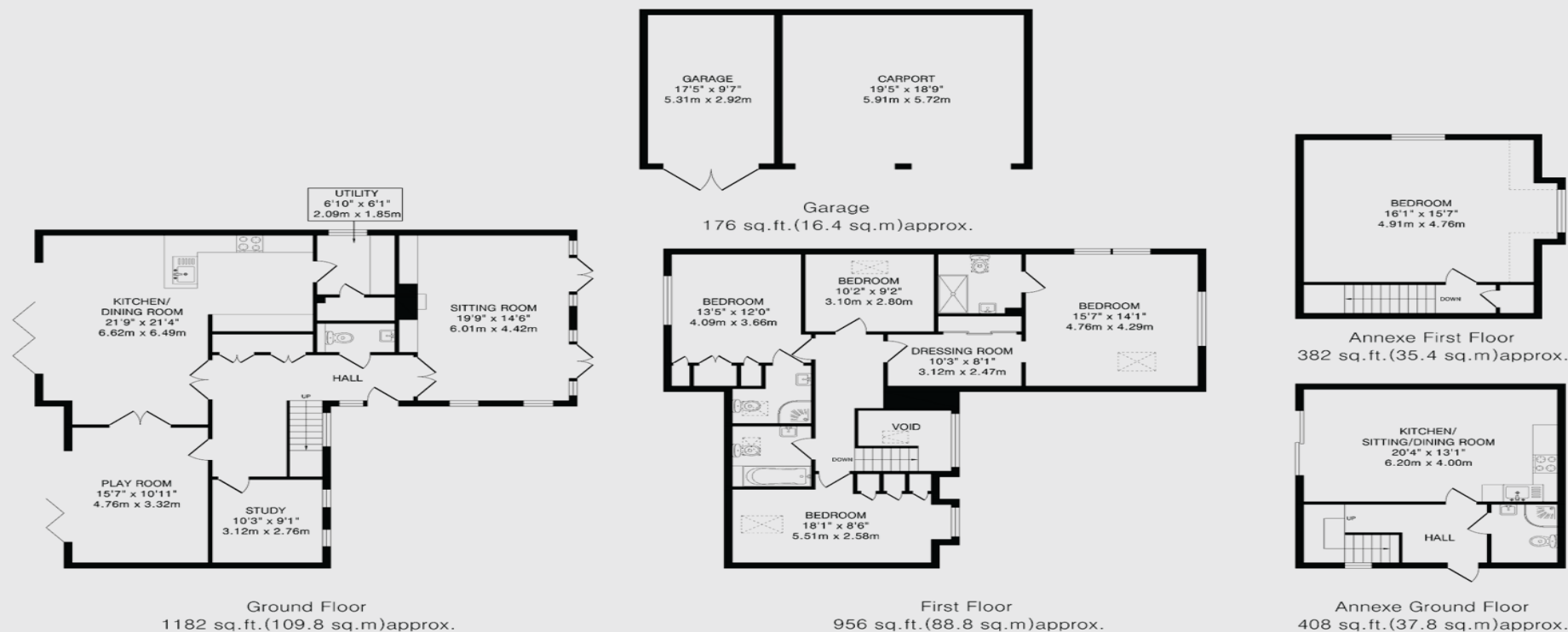
Location

Old Ramerick Barns is set in a beautiful rural location in Ickleford, on the fringes of the historic market town of Hitchin. Surrounded by open countryside, it offers a peaceful village setting with easy access to Hitchin's shops, schools, and transport links.









TOTAL FLOOR AREA: 3104 sq.ft.(288.2 sq.m)approx.
This floorplan is for illustration purposes only. The measurements and position of each element are approximate and must be viewed as such.

IMPORTANT INFORMATION:

These particulars do not constitute an offer or contract in whole or part. The statements contained herein are made without responsibility on the part of Ashtons or the vendors and they cannot be relied upon as representatives of fact. In respect of floor plans, these are for illustrative purposes only. The measurement and position of each element is approximate and must be viewed as such. Intending purchasers should therefore satisfy themselves by inspection or otherwise as to their correctness. The vendors do not make or give, and neither Ashtons nor any person in their employment has any authority to make or give, any representation or warranty whatsoever in relation to this property.

We offer a wide range of services through third party providers including solicitors, surveyors, removal firms, mortgage providers and EPC suppliers. We receive additional payments for administering suppliers quoting software and making referrals. You are not under any obligations to use these services and it is your discretion whether you choose to deal with these parties or your own preferred supplier. You should be aware the average payment we received in 2021 equated to £48.36 per referral.

Contact one of our property experts today:

📞 01462 429275 ✉ thecollection@ashtons.co.uk 💻 ashtons.co.uk/the-collection

Berkhamsted | Harpenden | Hitchin | Redbourn | St Albans | Welwyn Garden City

The
Collection
TOWN | COUNTRY | EQUESTRIAN