


Flat 5, 1 Marlborough
Park, Southdown
Road, Harpenden, AL5
1FB

 2 Bedrooms

 1 Bath/Shower Rooms

 1 Reception Rooms

 Allocated

 EPC Band C

Council Tax
Band: Not Yet Known

Deposit £1,903.84
Holding Deposit £380.76

£1,650 PCM

 **ashtons**
for life's great moves



Top floor two bedroom apartment in new build development with air conditioning and EV car charging port.

Description

Originally built by the respected local developers Jarvis of Harpenden. This top-floor two-bedroom apartment offers contemporary living with high-quality finishes and modern conveniences throughout.

Neutrally decorated and flooded with natural light via multiple Velux windows, the apartment boasts a bright and spacious open-plan living/kitchen area. The kitchen is fitted with integrated appliances and finished to a sleek, modern standard. The living space features a dormer roof design, creating a light and airy atmosphere enhanced by wooden flooring throughout.

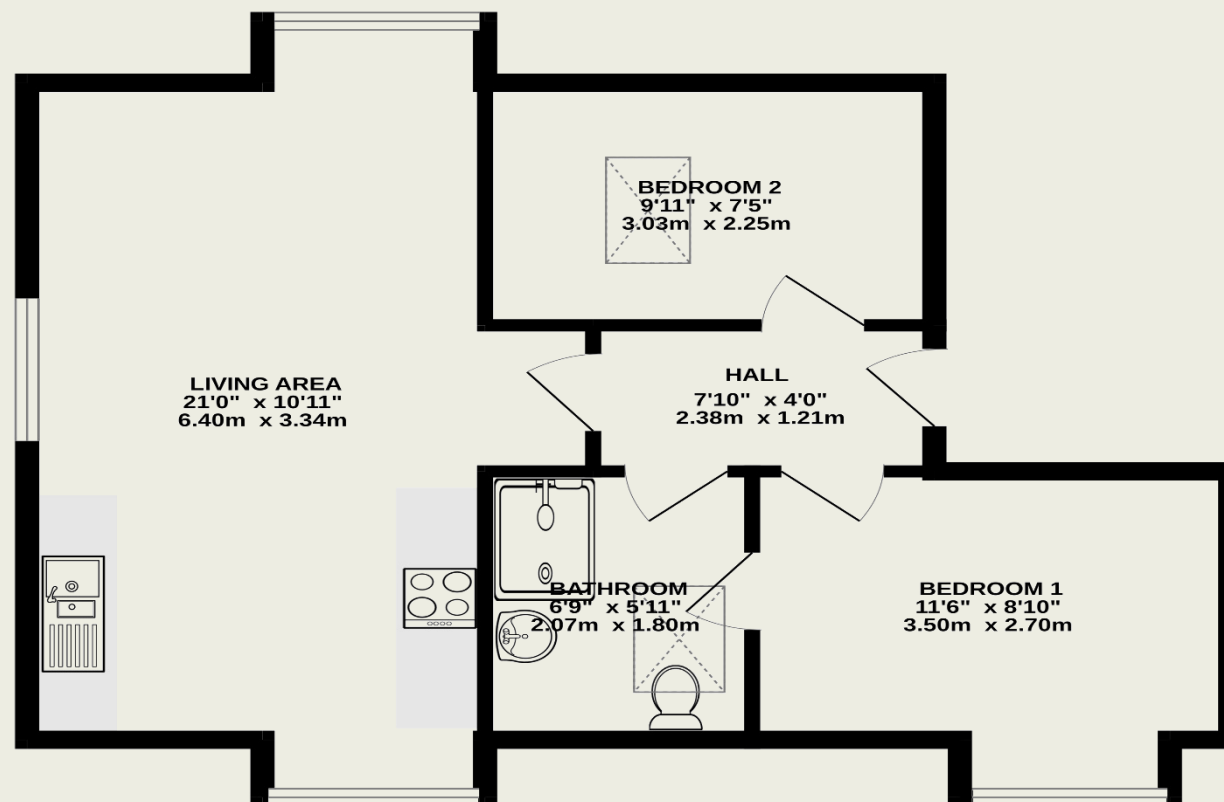
Both bright and airy bedrooms include practical eaves storage, making excellent use of space. The generously sized bathroom is finished to a high standard, complete with a large shower cubicle and a heated towel rail.

The apartment benefits from combined heating and cooling air conditioning system, USB charging ports and hardwired broadband fibre BT Openreach has recently upgraded the infrastructure, offering the potential for ultra-fast internet speeds depending on the selected provider and package.

Externally, the property includes one allocated parking space equipped with its own EV charging point.

Location

Southdown Road is a convenient central setting that provides a wonderful convenience for any stage of life. Close to the open spaces of Harpenden Common, the scenery is superb and changes with the seasons. Harpenden Town centre with its diverse range of shops and restaurants are just a short idyllic stroll over the common along with the mainline station (Direct to St Pancras International in under 30 minutes).



TOTAL FLOOR AREA : 561 sq.ft. (52.1 sq.m.) approx.

This floorplan is for illustration purposes only. The measurements and position of each element are approximate and must be viewed as such.

These particulars do not constitute an offer or contract in whole or part. The statements contained herein are made without responsibility on the part of Ashtons or the vendors and they cannot be relied upon as representatives of fact. In respect of floor plans, these are for illustrative purposes only. The measurement and position of each element is approximate and must be viewed as such. Intending purchasers should therefore satisfy themselves by inspection or otherwise as to their correctness. The vendors do not make or give, and neither Ashtons nor any person in their employment has any authority to make or give, any representation or warranty whatsoever in relation to this property.