

Dukes Way
Berkhamsted
HP4 1JP

 3 Bedrooms

 1 Bath/Shower Room

 1 Reception Room

 Garage & Off Street
Parking

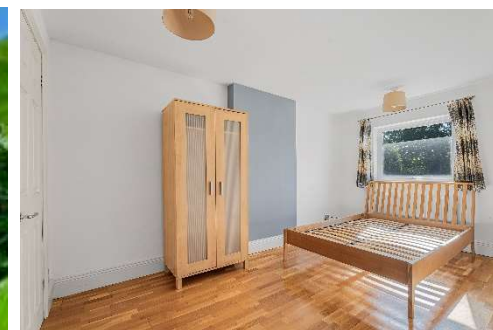
 West Facing

 EPC Band C

Council Tax
Band: D £ 2,330.38 (2025/2026)
Local Authority: Dacorum Borough
Council

Guide Price
£575,000 Freehold

 **ashtons**
for life's great moves



A three bedroom house in a popular area with highly regarded schools close by, a garage, parking space and no upper chain.

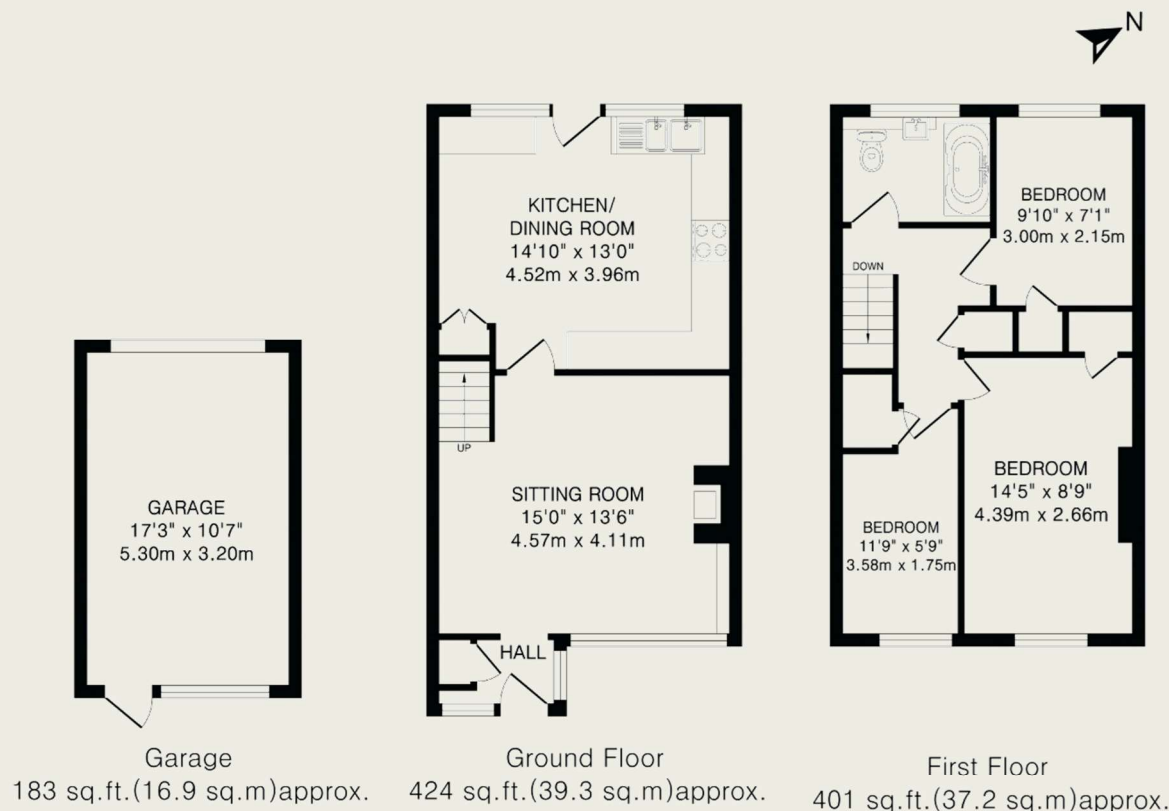
Description

A fine three bedroom house, always popular with young families and downsizers alike. Dukes Way is located just off Bridgewater Road which leads down to Berkhamsted railway station (just a few minutes walk). This well presented house is offered to the market with no upper chain and has a great sized living room with a fireplace and a super kitchen with space for a dining table and fitted oven, fridge and freezer and a large gas hob with an extractor fan. There are windows and a door leading to the garden. The first floor has three bedrooms all with fitted storage cupboards and wardrobes and there is a modern family bathroom.

The west facing rear garden has a decked area perfect for summer BBQs and entertaining. There is a low-maintenance Astro-turf lawn and a door into the garage and a gate to the parking area.

Location

Dukes Way is within walking distance of the town centre and mainline station that provides a good rail service into Euston London (approximately 35 mins). An excellent primary school is close-by as are the renowned secondary schools in the area. Very well run sports clubs are nearby which include Berkhamsted Lawn Tennis Club and Berkhamsted Football Club, cricket club and a bowls club.



TOTAL FLOOR AREA: 825 sq.ft.(76.5 sq.m)approx

This floorplan is for illustration purposes only. The measurements and position of each element are approximate and must be viewed as such.

Important Information

These particulars do not constitute an offer or contract in whole or part. The statements contained herein are made without responsibility on the part of Ashtons or the vendors and they cannot be relied upon as representatives of fact. In respect of floor plans, these are for illustrative purposes only. The measurement and position of each element is approximate and must be viewed as such. Intending purchasers should therefore satisfy themselves by inspection or otherwise as to their correctness. The vendors do not make or give, and neither Ashtons nor any person in their employment has any authority to make or give, any representation or warranty whatsoever in relation to this property.

We offer a wide range of services through third-party providers including solicitors, surveyors, removal firms, mortgage providers and EPC suppliers. We receive additional payments for administering suppliers quoting software and making referrals. You are not under any obligation to use these services and it is your discretion whether you choose to deal with these parties or your own preferred supplier. You should be aware the average payment we received in 2021 equated to £48.36 per referral.