



Little Dell,
Welwyn Garden City,
Hertfordshire, AL8

 3 Bedrooms

 1 Bathroom
1 Cloakroom

 2 Reception Rooms

 On Street Parking

 Secluded Rear Garden

 EPC Band C

Council Tax
Band: D – £2,291.70 (2025-2026)

Guide Price
£475,000 Freehold

 **ashtons**
for life's great moves



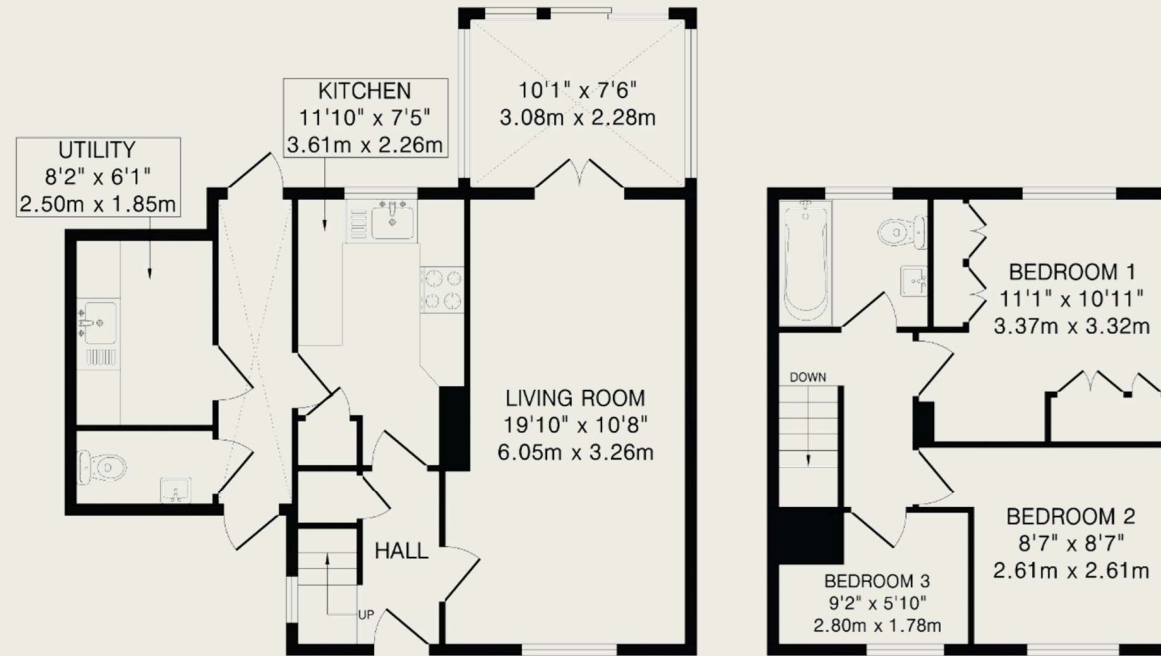
A traditional 'Garden City' style semi-detached family home with conservatory, situated at the end of a cul-de-sac in one of the West Side's most sought after locations.

Description

Originally built in the 1950s, this splendid, bright family home includes many appealing features. The main living room offers great space for comfortable living as well as a dining area and features a bright aspect, attractive fireplace and opens into a fully double glazed conservatory with an outlook over the easterly facing rear garden. The modern kitchen benefits from a built-in oven, hob, extractor and quality-built units and worktops. There is a door to the side which provides access to doors to the front and rear. A large storage/utility room and downstairs WC complete the ground floor accommodation. The first floor comprises a spacious main bedroom, a small double bedroom, a single bedroom and a fully-tiled, stylish modern bathroom. For comfort and economy, double glazing and gas to radiator heating are installed throughout. In addition, planning permission exists for a double storey rear extension. Externally, the front garden is laid to lawn with a pathway leading to side access. The secluded rear garden has a patio and an attractive lawned area which backs onto a small wooded coppice.

Location

Little Dell is a delightful cul-de-sac, close to the Pentley Park and the Knightsfield areas. Popular primary schools (Templewood) and woodland walks (Sherrardspark Woods) are nearby. The town centre is only a 10 minute walk away, offering great shopping amenities - John Lewis, Waitrose, Sainsbury's, The Howard Shopping Centre - along with a mainline rail station offering fast and frequent services to London.



Ground Floor
542 sq.ft.(50.3 sq.m)approx.

First Floor
343 sq.ft.(31.8 sq.m)approx.

TOTAL FLOOR AREA: 885 sq.ft.(82.1 sq.m)approx.
This floorplan is for illustration purposes only. The measurements and position of each element are approximate and must be viewed as such.

Important Information

These particulars do not constitute an offer or contract in whole or part. The statements contained herein are made without responsibility on the part of Ashtons or the vendors and they cannot be relied upon as representatives of fact. In respect of floor plans, these are for illustrative purposes only. The measurement and position of each element is approximate and must be viewed as such. Intending purchasers should therefore satisfy themselves by inspection or otherwise as to their correctness. The vendors do not make or give, and neither Ashtons nor any person in their employment has any authority to make or give, any representation or warranty whatsoever in relation to this property.

We offer a wide range of services through third-party providers including solicitors, surveyors, removal firms, mortgage providers and EPC suppliers. We receive additional payments for administering suppliers quoting software and making referrals. You are not under any obligation to use these services and it is your discretion whether you choose to deal with these parties or your own preferred supplier. You should be aware the average payment we received in 2021 equated to £48.36 per referral.