



3 Bedrooms



3 Bath/Shower Room + WC



2 Reception Rooms



Garage



Courtyard Garden



EPC Band C

Council Tax

Band: G £3,883.96 (2025/2026)

Local Authority

Dacorum Borough Council

Holding Deposit: £865.38

Deposit: £4,326.90





## Manor Street, Berkhamsted, HP4 2BN

This three bedroom link-detached house is offered for rent in immaculate condition and is located in central Berkhamsted, just moments from the shops and a short walk from the station

- Three double bedrooms
- Three bathrooms
- Two reception Rooms
- Garage
- Central Berkhamsted
- Excellent decorative order
- Large Kitchen/Dining Room

### Description

This very rarely available house is offered for rent furnished or unfurnished and offers modern living in the most central of locations. With an attractive frontage and a garage for parking and storage, this period but contemporary house has an impressive kitchen/dining room with Quooker boiling water tap, fitted appliances and ample storage cupboards and a large central island and breakfast bar. Bi-folding doors lead out to a courtyard, a tranquil place to relax with a water feature. There is a living room with a fireplace, front aspect windows and a door to the courtyard garden and a second reception room, currently used as a study. There is also a convenient cloakroom with w/c.

On the first floor are three double sized bedrooms, two of which have ensembles, and there is a family bathroom. Stairs lead up to a loft room. There is a good sized garage with an electric up and over door.

### Location

Located in the heart of Berkhamsted, this house has all our vibrant town has to offer on its doorstep. The station is a few minutes walk away and the A41 is a five minute drive away which leads on to the M25 and, in the other direction, the peaceful open area of Ashridge is a very short drive away.

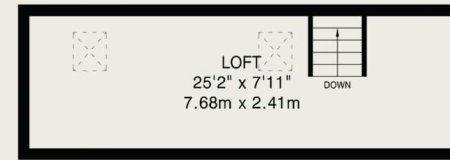




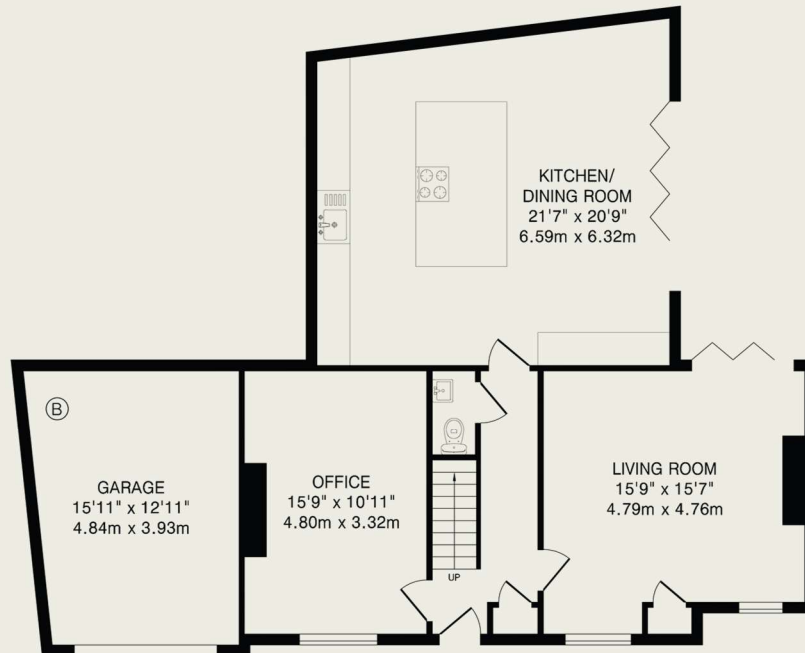


#### Important Information

These particulars do not constitute an offer or contract in whole or part. The statements contained herein are made without responsibility on the part of Ashtons or the vendors and they cannot be relied upon as representatives of fact. In respect of floor plans, these are for illustrative purposes only. The measurement and position of each element is approximate and must be viewed as such. Intending purchasers should therefore satisfy themselves by inspection or otherwise as to their correctness. The vendors do not make or give, and neither Ashtons nor any person in their employment has any authority to make or give, any representation or warranty whatsoever in relation to this property. We offer a wide range of services through third party providers including solicitors, surveyors, removal firms, mortgage providers and EPC suppliers. We receive additional payments for administering suppliers quoting software and making referrals. You are not under any obligations to use these services and it is your discretion whether you choose to deal with these parties or your own preferred supplier. You should be aware the average payment we received in 2021 equated to £48.36 per referral.



Second Floor  
201 sq.ft.(18.6 sq.m)approx.



Ground Floor  
1133 sq.ft.(105.2 sq.m)approx.



First Floor  
686 sq.ft.(63.7 sq.m)approx.

TOTAL FLOOR AREA: 2020 sq.ft.(187.5 sq.m)approx.

This floor plan is for illustration purposes only. The measurements and position of each element are approximate and must be viewed as such.