



Orchard Road, Tewin, Welwyn, AL6 | Guide Price £1,650,000 Freehold

 6 Bedrooms  4 Bath/Shower Rooms  4 Reception Rooms  Garage and Driveway  Private Gardens
 EPC Band D  Council Band: H - £4,742.54 25/26  Welwyn & Hatfield Council

ashtons.co.uk

The
Collection
TOWN | COUNTRY | EQUESTRIAN

Orchard Road, Tewin, Welwyn, AL6

Set in one of the area's most sought-after locations, this substantial and secluded residence occupies a private 0.7-acre woodland plot. Boasting over 4,000 sq. ft. of adaptable living space, it offers exciting potential to further enhance or extend to suit your vision.

Description

Tucked away on a tranquil and private woodland plot of approximately 0.7 acres, this impressive detached family home offers over 4,000 sq. ft. of living space in one of the region's most desirable addresses. Surrounded by other substantial residences set on generous plots, this home combines privacy, space, and elegance in a truly idyllic setting.

Set well back from the road and approached via a private driveway, the house enjoys a peaceful position with picturesque views over mature gardens that gently slope towards a charming wooded dell. Designed to sit almost centrally within its grounds, the house is enveloped by trees, providing exceptional seclusion on all sides. The property welcomes you through an elegant reception hall, which serves as the heart of the home, leading to a series of well-proportioned reception rooms. These include a sitting room and a separate dining room - ideal for entertaining on a grand scale. The spacious kitchen stretches nearly 20ft across the rear of the house and has been finished to a high standard with hand-crafted cabinetry, black granite work surfaces and travertine limestone flooring. This seamlessly continues into a generous utility room with additional units, garden access, a cloakroom, and a doorway into the family room. The main sitting room exudes sophistication with a Nash-style fireplace and expansive picture windows that frame the front garden views. Double doors open into the formal dining room, which also features a fireplace and views to both the front and rear gardens. A large study provides a quiet space for working from home or could be easily adapted into a playroom or additional reception area. The family room enjoys direct access to a sunny terrace through sliding doors, creating a wonderful indoor-outdoor flow ideal for summer entertaining.

Upstairs, the generous accommodation continues with six well-appointed bedrooms. The principal suite offers built-in wardrobes and an en-suite bathroom, while a spacious guest suite enjoys a bay window to the front and an en-suite shower room. The three further bedrooms share a stylish family bathroom. The annexe bedroom is particularly versatile and perfectly suited to independent or multi-generation living, offering a large studio-style space with an en-suite shower room and access from both the ground floor and first floor landing.

Outside, the gardens wrap around the house, offering exceptional privacy and a peaceful, natural backdrop. A brick-paved driveway leads to the front and side of the home, providing ample parking for multiple vehicles, and the integral double garage - currently used as a gym, adds to the property's flexibility.



Location

Tewin Wood is a sought-after residential area with large family houses which run through light woodland. There is a village store one mile away at Tewin. The area is well served by several local pubs and has fabulous countryside walks on the doorstep. More extensive shopping and leisure facilities are within an easy drive in both Welwyn Garden City and Hertford town centres.

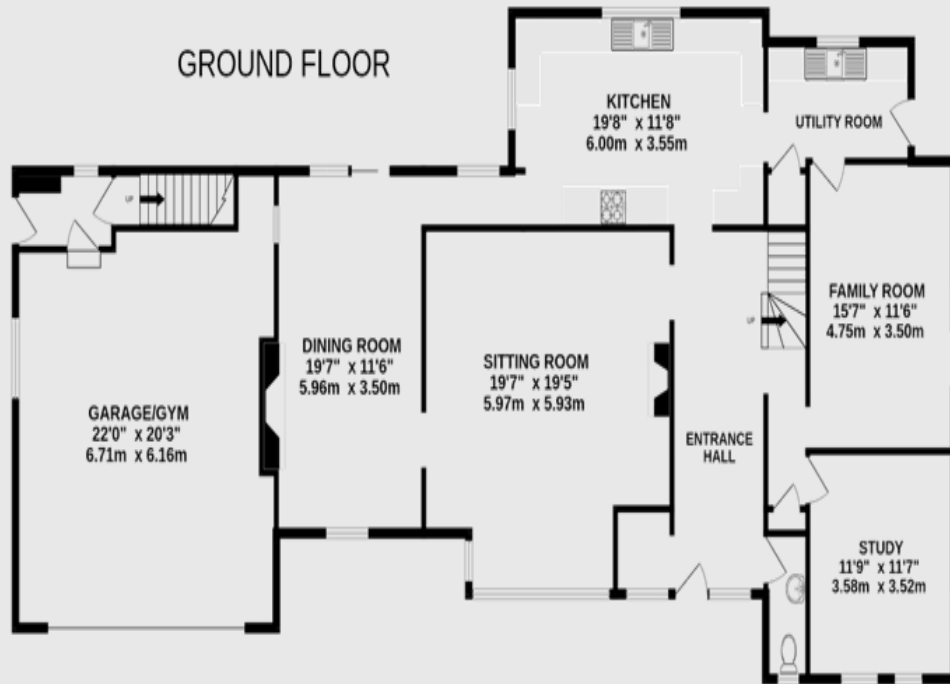
Major transportation links are close by with the A1(M) Junction 6 just 4 miles away and Welwyn North station is just 1.6 miles in Digswell (London Kings Cross 21 minutes).



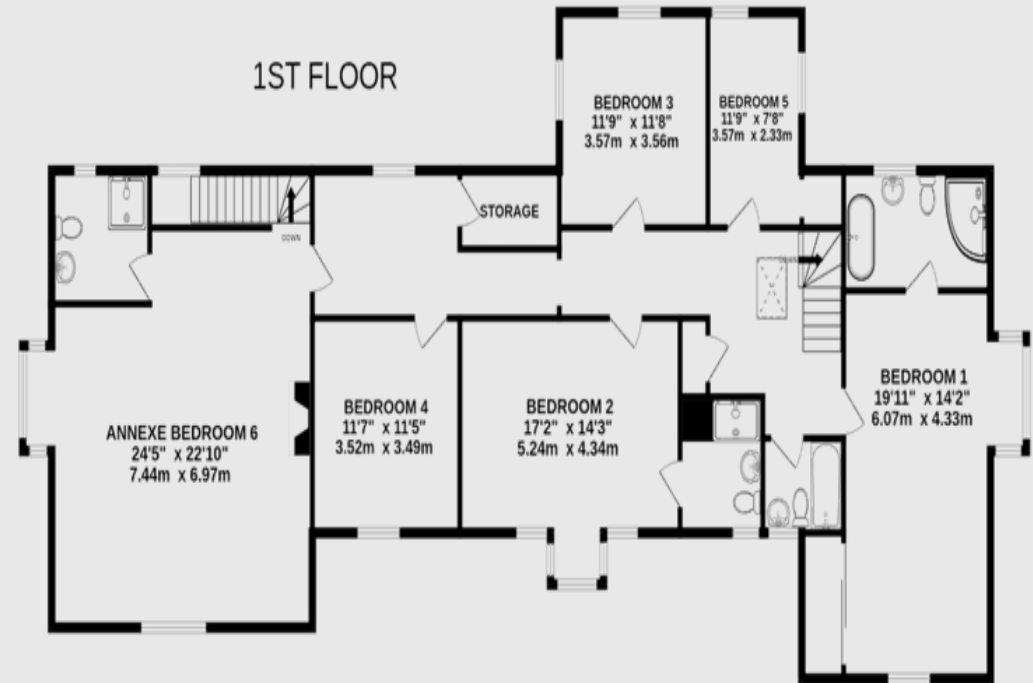




GROUND FLOOR



1ST FLOOR



TOTAL FLOOR AREA: 4005sq.ft. (372.1 sq.m.) approx.

This floorplan is for illustrative purposes only. The measurement and position of each element is approximate and must be viewed as such.

IMPORTANT INFORMATION:

These particulars do not constitute an offer or contract in whole or part. The statements contained herein are made without responsibility on the part of Ashtons or the vendors and they cannot be relied upon as representatives of fact. In respect of floor plans, these are for illustrative purposes only. The measurement and position of each element is approximate and must be viewed as such. Intending purchasers should therefore satisfy themselves by inspection or otherwise as to their correctness. The vendors do not make or give, and neither Ashtons nor any person in their employment has any authority to make or give, any representation or warranty whatsoever in relation to this property.

We offer a wide range of services through third party providers including solicitors, surveyors, removal firms, mortgage providers and EPC suppliers. We receive additional payments for administering suppliers quoting software and making referrals. You are not under any obligations to use these services and it is your discretion whether you choose to deal with these parties or your own preferred supplier. You should be aware the average payment we received in 2021 equated to £48.36 per referral.

Contact one of our property experts today:

📞 01707331100 ✉ thecollection@ashtons.co.uk 💻 ashtons.co.uk/the-collection

Berkhamsted | Harpenden | Hitchin | Redbourn | St Albans | Welwyn Garden City

The
Collection
TOWN | COUNTRY | EQUESTRIAN