



3 Bedrooms



2 Bath/Shower Room + WC



2 Reception Rooms



Driveway



Private Garden



EPC Band - C

Council Tax

Band D - £2,291.70 (2025/26)

Local Authority

Welwyn Hatfield Council



Raymonds Plain, Welwyn Garden City, Hertfordshire, AL7
Guide Price £490,000 Freehold

Raymonds Plain, Welwyn Garden City

A spacious and well-presented three bedroom semi-detached house, well placed for popular local schools, shops and transport links, with off street parking and a well tended rear garden.

- Three Bedrooms
- Well-presented throughout
- Off Street Parking
- Extended
- Two Reception Rooms
- Modern bathroom, shower room and Guest cloakroom
- Close to amenities and transport links

Description

A well-presented and spacious three-bedroom semi-detached home, ideally located within walking distance to local shops and offering easy access to the town centre.

This charming property benefits from a thoughtfully designed single-storey rear extension, providing additional living space ideal for modern family life. The ground floor features two generous reception rooms, a convenient WC and separate shower, and a stylish kitchen with direct access to a well-maintained rear garden—perfect for entertaining or relaxing.

Upstairs, you'll find three comfortable bedrooms and a family bathroom. Further benefits include a private driveway providing off-street parking and the property's location within a sought-after school catchment area.

An ideal home for families or those looking to upsize, this property offers both space and convenience in a popular residential setting.

Location

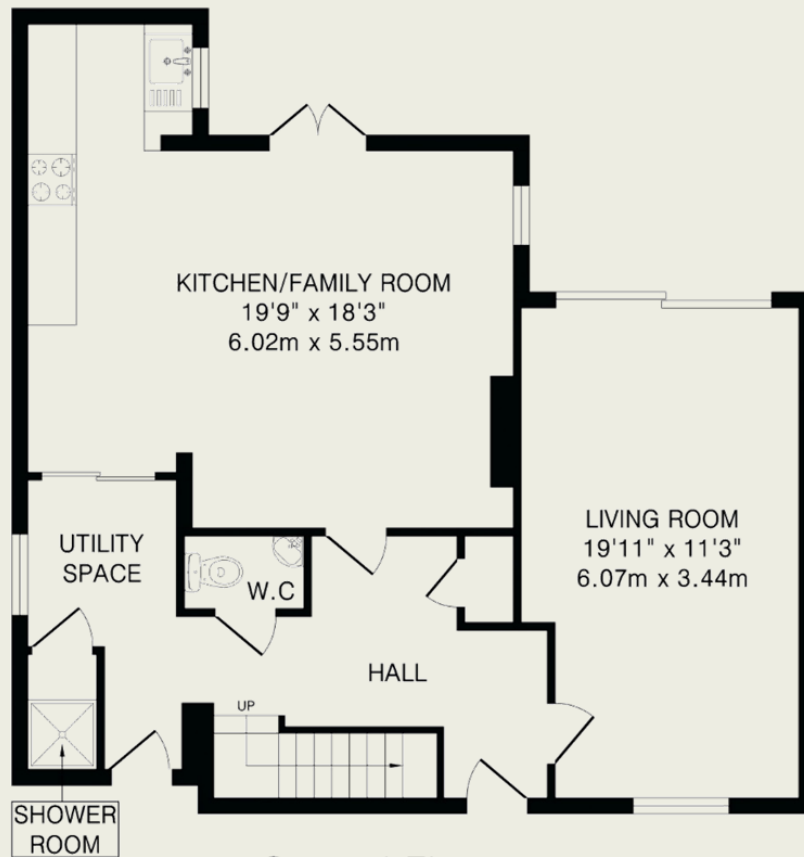
Located in a quiet residential area of Welwyn Garden City, Raymonds Plain offers excellent access to local amenities, highly regarded schools, and green open spaces. The property is within walking distance of shops and enjoys convenient transport links to the town centre and mainline station.



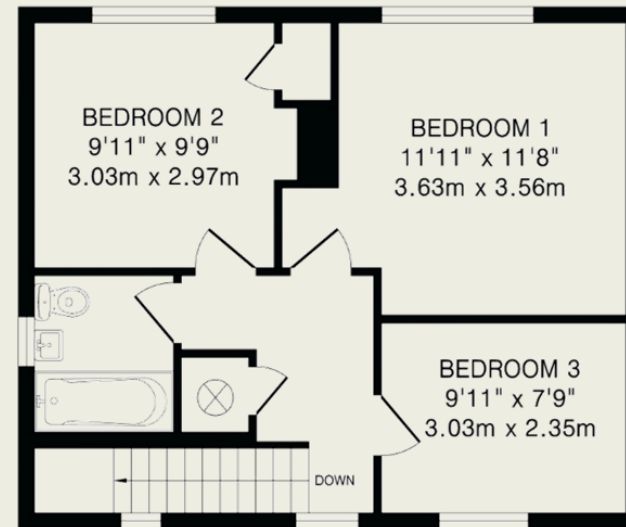


Important Information

These particulars do not constitute an offer or contract in whole or part. The statements contained herein are made without responsibility on the part of Ashtons or the vendors and they cannot be relied upon as representatives of fact. In respect of floor plans, these are for illustrative purposes only. The measurement and position of each element is approximate and must be viewed as such. Intending purchasers should therefore satisfy themselves by inspection or otherwise as to their correctness. The vendors do not make or give, and neither Ashtons nor any person in their employment has any authority to make or give, any representation or warranty whatsoever in relation to this property. We offer a wide range of services through third party providers including solicitors, surveyors, removal firms, mortgage providers and EPC suppliers. We receive additional payments for administering suppliers quoting software and making referrals. You are not under any obligations to use these services and it is your discretion whether you choose to deal with these parties or your own preferred supplier. You should be aware the average payment we received in 2021 equated to £48.36 per referral.



Ground Floor
776 sq.ft.(72.0 sq.m)approx.



First Floor
479 sq.ft.(44.4 sq.m)approx.

TOTAL FLOOR AREA: 1255 sq.ft.(116.4 sq.m)approx.

This floorplan is for illustrative purposes only. The measurement and position of each element is approximate and must be viewed as such.